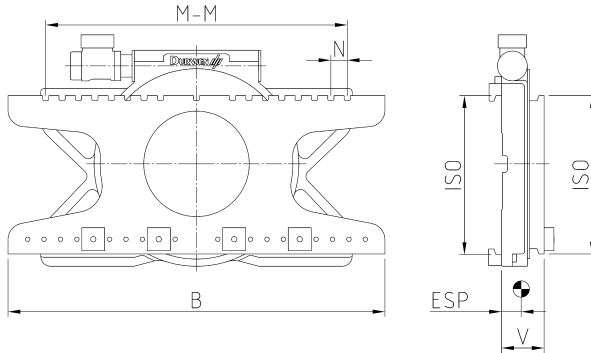


360° rotator

Fishing industry version

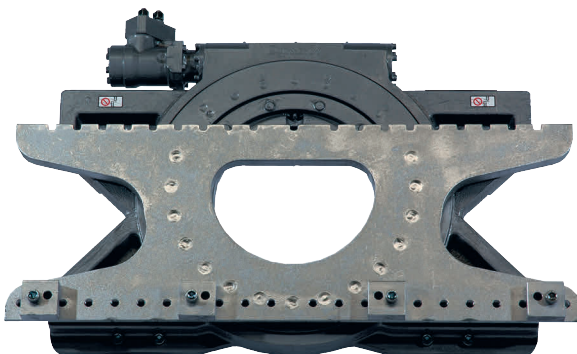
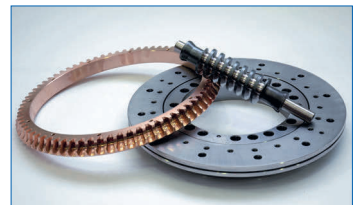
DG-F

The **Rotator DG-F** has a cast steel frame enabling a compact design. The worm gear has several teeth meshing at one time thus helping to increase the service life of the attachment. A seal fitted as standard protects the rotator against the ingress of dirt and dust. This version includes multi layer surface protection, hot dip galvanized parts, sealed bolts, external lubricant access and is therefore perfectly suited for the fishing and port industries.



type	capacity kg/mm LC	lift truck capacity to	ISO	width B mm	max. torque ΔP 100 bar Nm	centre distance M - M mm	N mm	V LLC mm	ESP COG mm	weight kg
DG 16-F	1600/500	1,5-1,8/500	II	880	4000	260-660	50	117	51	217
DG 20-F	2000/500	2,0/500	II	980	4000	260-760	50	117	52	223
DG 25-F	2500/600	2,5/600	II	1100	7300	260-860	50	120	53	285
DG 30-F	3000/500	3,0/500	III	1150	7300	320-920	50	130	61	335
DG 35-F	3500/500	3,0/600-3,5/500	III	1150	11700	320-920	50	135	65	350

- 1 hydraulic function required
- includes hoses and couplings
- safety valve as standard
- forks not included
- hook-on forks reinforced for rotator use must be used
- sideshift upon request only
- colour dark grey



DURWEN 
Forklift Attachments

More than 75 years experience